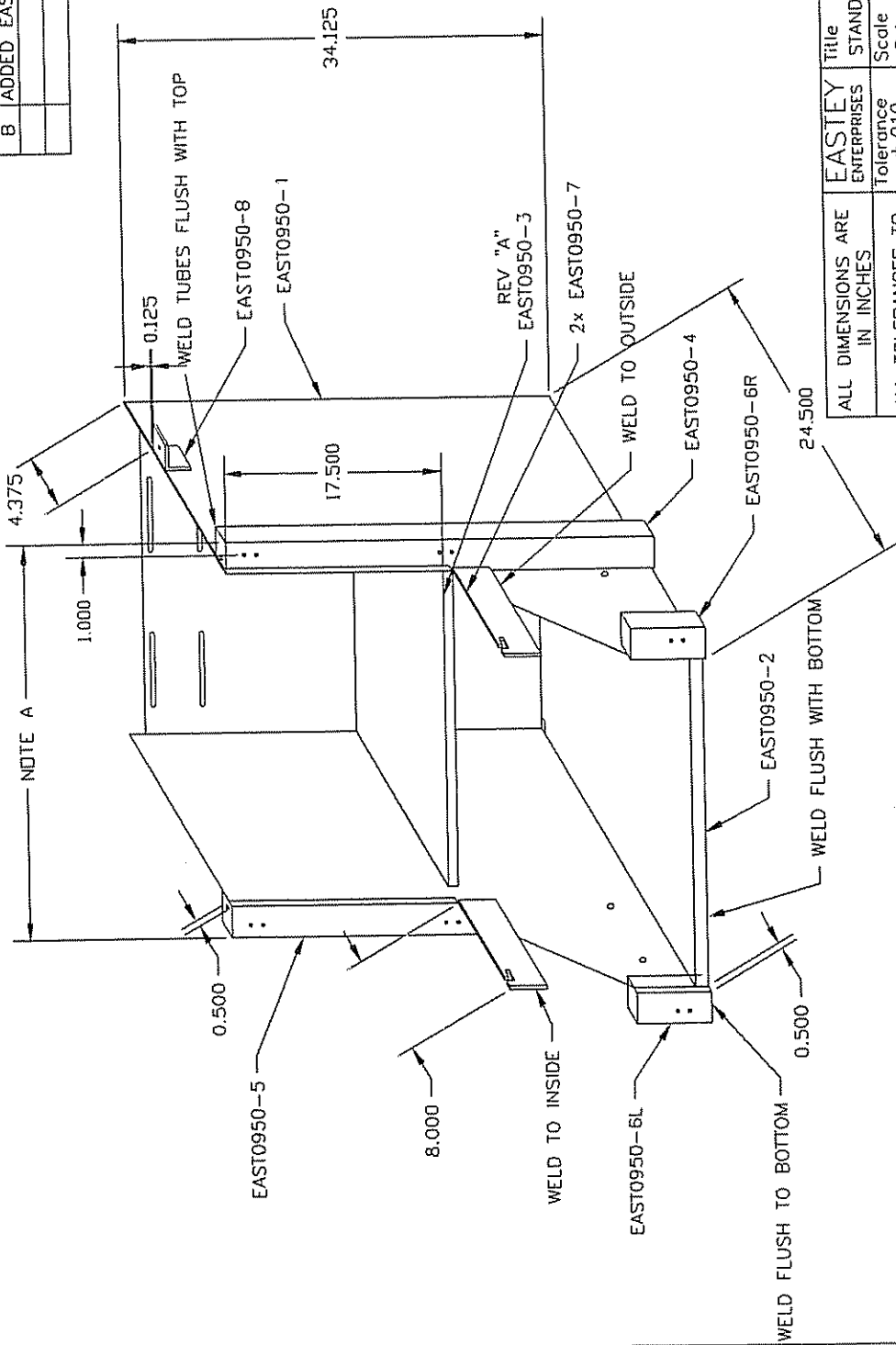


REVISIONS

REV	DESCRIPTION	DATE	APPROVED
A	MOVED -3 DOWN 3/4"	8-10-01	
B	ADDED EAST0950-8	3-9-04	



NOTE : A
 26" UNWIND = 31.6"
 36" UNWIND = 46.0"
 50" UNWIND = 61.0"

ALL DIMENSIONS ARE IN INCHES		EASTY ENTERPRISES		Title	
ALL TOLERANCES TO BE ±.01 UNLESS OTHERWISE SPECIFIED		Tolerance	Scale	Material	STAND ALONE P.F.U. COMP
FINISH - NONE		±.010 (UNLESS SPECIFIED)	8:1	SEE -1 THRU -7	
		Drafter	Part Numbers		
		TROY S.	EAST0950		
		CHK By	Date	Part size	
			5-12-99	0.000 x 0.000	